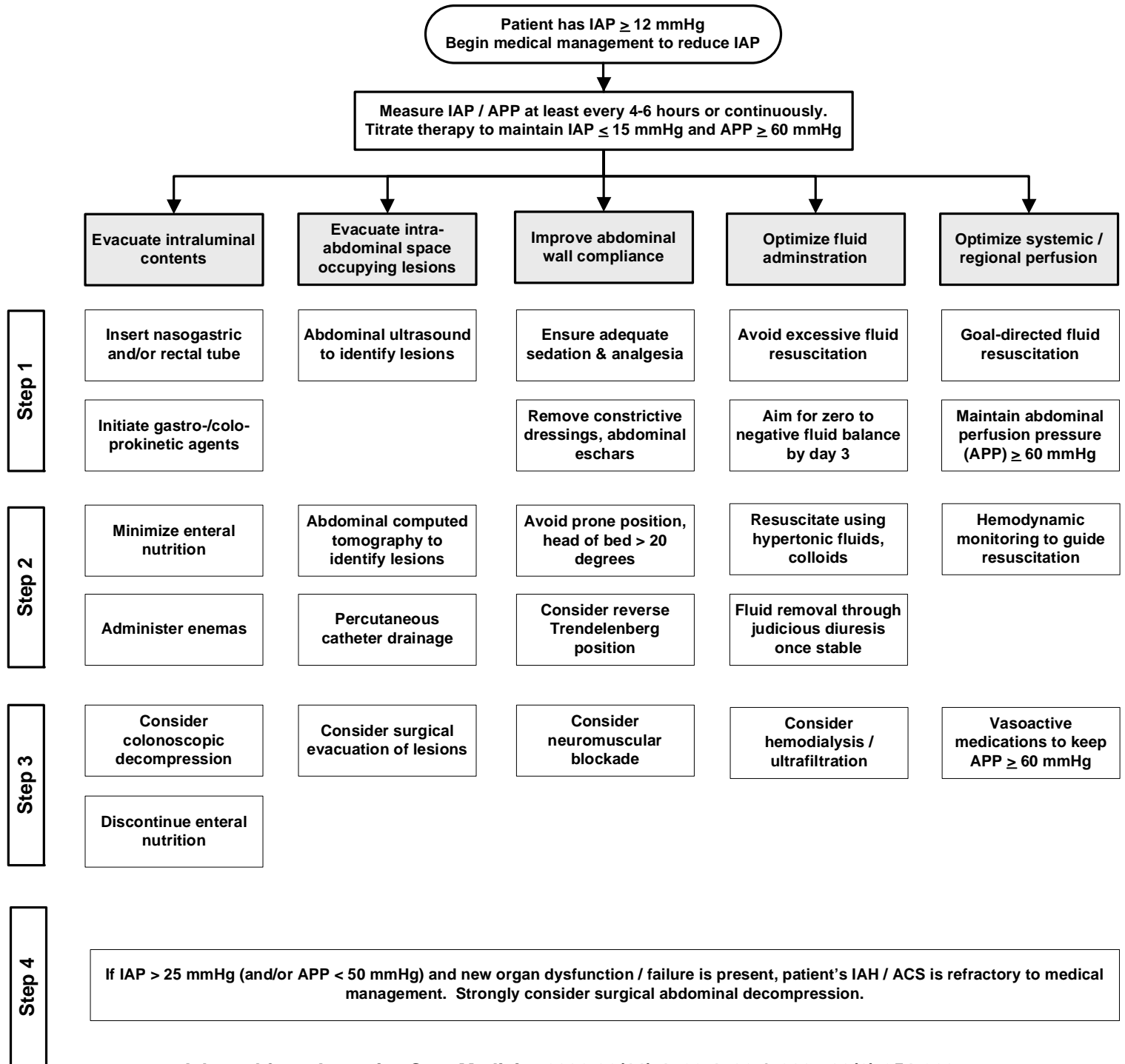


IAH / ACS MEDICAL MANAGEMENT ALGORITHM

- The choice (and success) of the medical management strategies listed below is strongly related to both the etiology of the patient's IAH / ACS and the patient's clinical situation. The appropriateness of each intervention should always be considered prior to implementing these interventions in any individual patient.
- The interventions should be applied in a stepwise fashion until the patient's intra-abdominal pressure (IAP) decreases.
- If there is no response to a particular intervention, therapy should be escalated to the next step in the algorithm.



Adapted from *Intensive Care Medicine* 2006;32(11):1722-1732 & 2007;33(6):951-962
 © 2009 World Society of the Abdominal Compartment Syndrome. All rights reserved.



World Society of the Abdominal Compartment Syndrome (WSACS)

86 West Underwood Street, Suite 201, Orlando, Florida 32806 USA
 Tel: +01 407 841 5296 Fax: +01 407 648 3686 e-mail: info@wsacs.org
 Website: <http://www.wsacs.org>